



Craft Labor Panel



Don Cotchen
VP Sales
Industrial Info Resources



Brent Flavin
Co-Founder
BoomNation



Martha Parker
Ergonomist & Managing Director
Texas A&M Ergo Center





www.industrialinfo.com

Don Cotchen

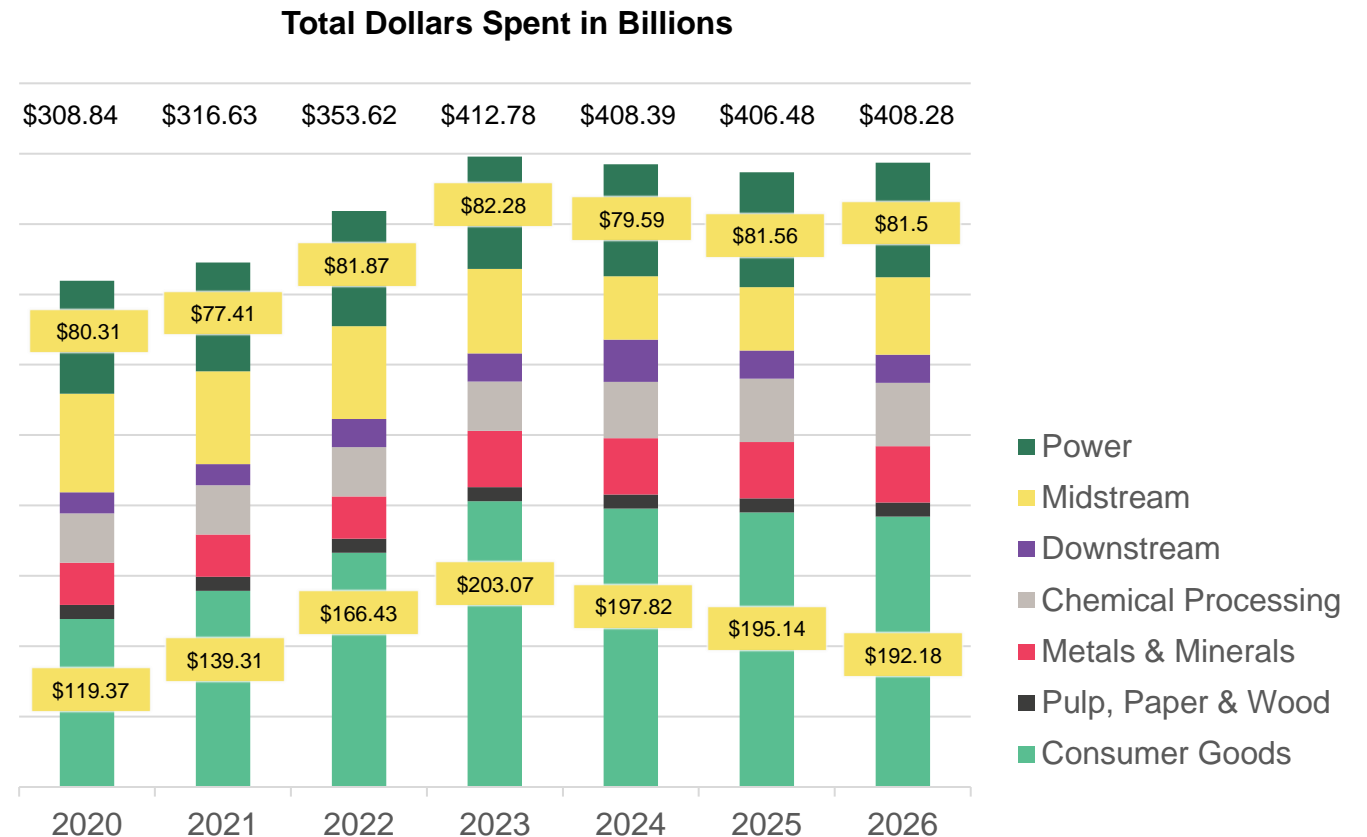
VP Sales, Industrial Info Resources
dcotchen@industrialinfo.com

Spending Forecast

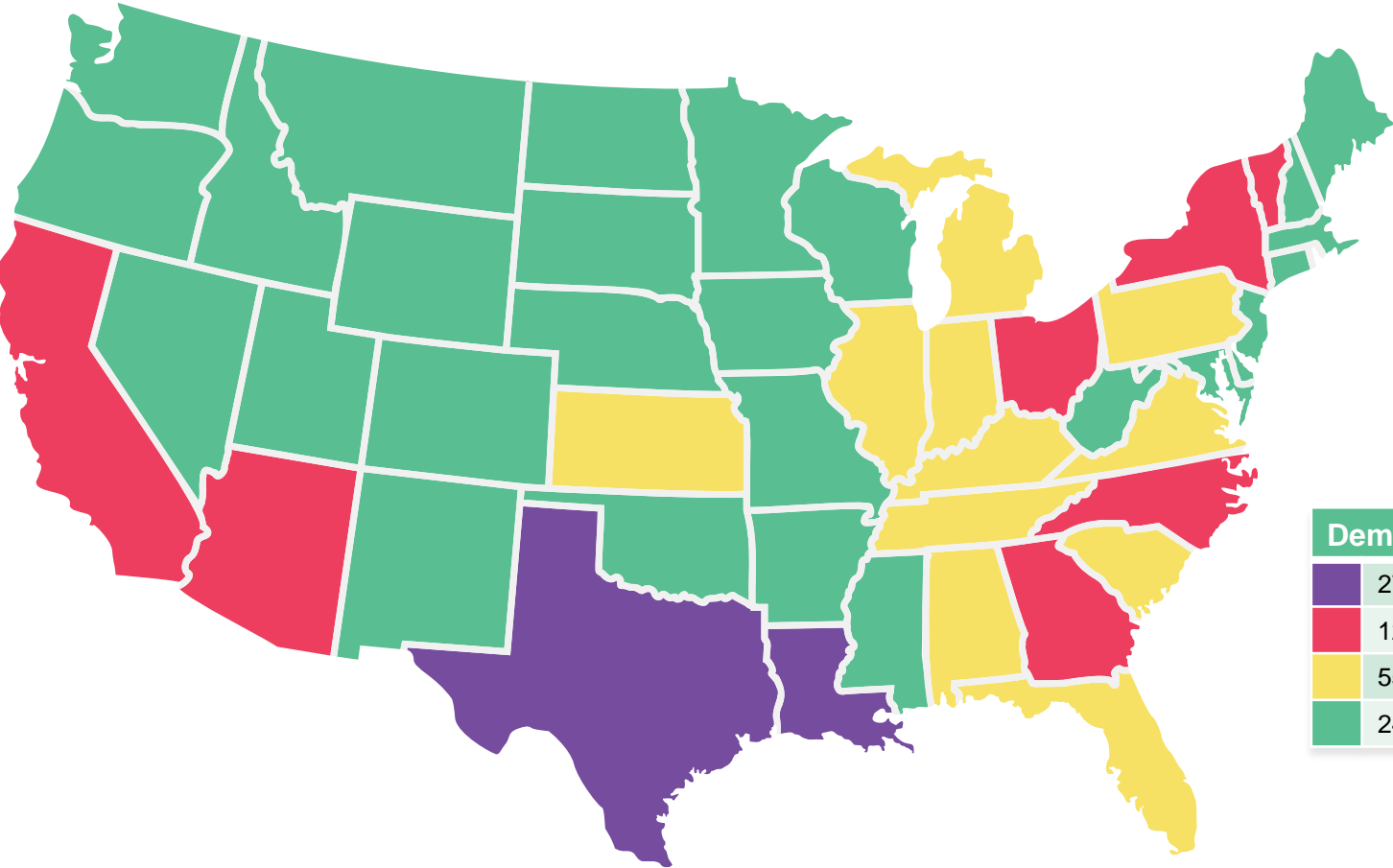
Annualized U.S. Industrial CAPEX & MRO

Major Industries Driving
U.S. Labor Demand and
the Planned Spending for 2024.

- LNG - \$20B
- Semiconductor - \$20.4B
- Automotive/EV Battery - \$33.6B
- Data Center - \$19B



Top Line US labor demand by Region and Craft in Man Hours

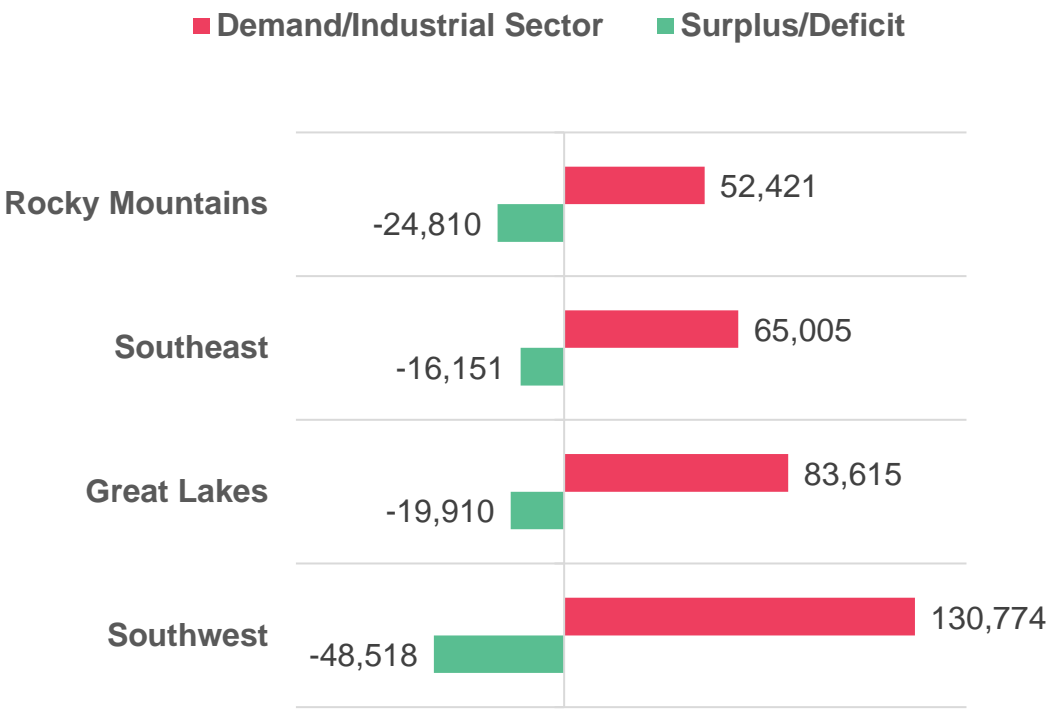


Demand by Region	
	273,763,681
	125,570,563
	55,737,518
	24,942,001

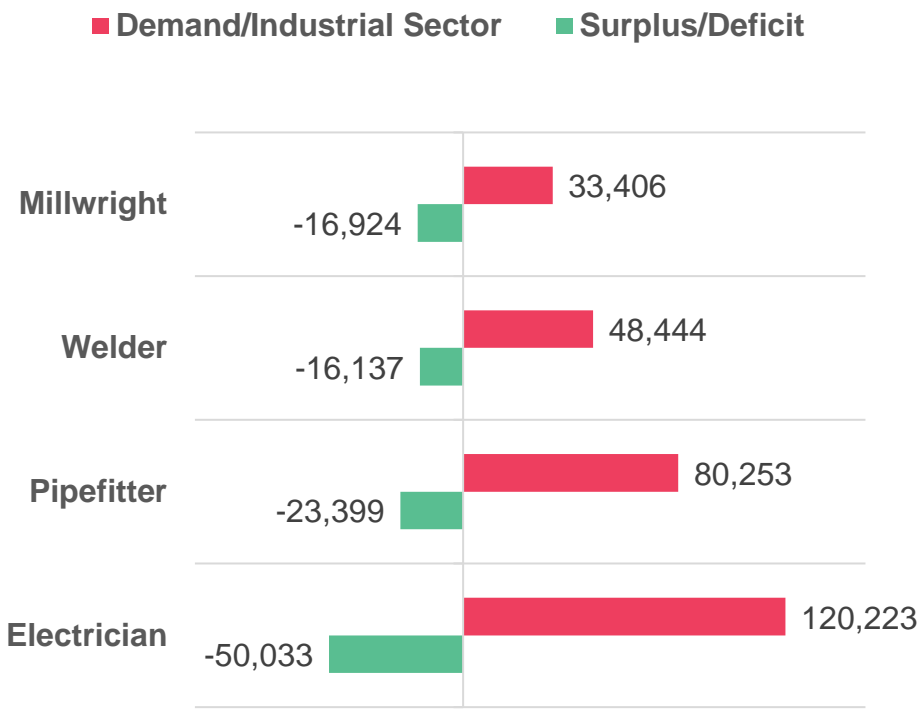
Demand by Craft	
Electrician	422,060,637
Plumber/Pipefitter	289,671,619
Welder	175,927,694
Operator	122,353,494
Ironworker	118,804,581
Millwright	116,696,595
Instrumentation Tech	98,801,193
Carpenter	92,634,385
Scaffold Builder	87,409,736
Boilermaker	84,464,083
Insulator	51,035,804
Painter	38,365,485

US Labor Demand and Surplus/Deficit by Region and Craft

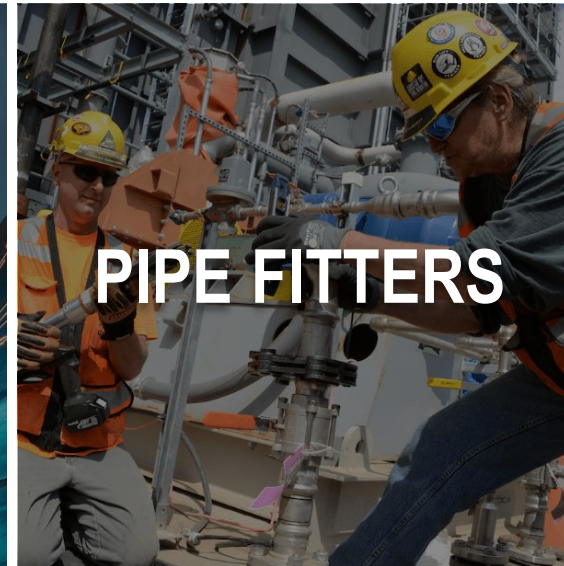
2023 US Demand and Surplus/Deficit by Region



2023 US Demand and Surplus/Deficit by Craft



US Labor Demand and Surplus/Deficit by Region and Craft



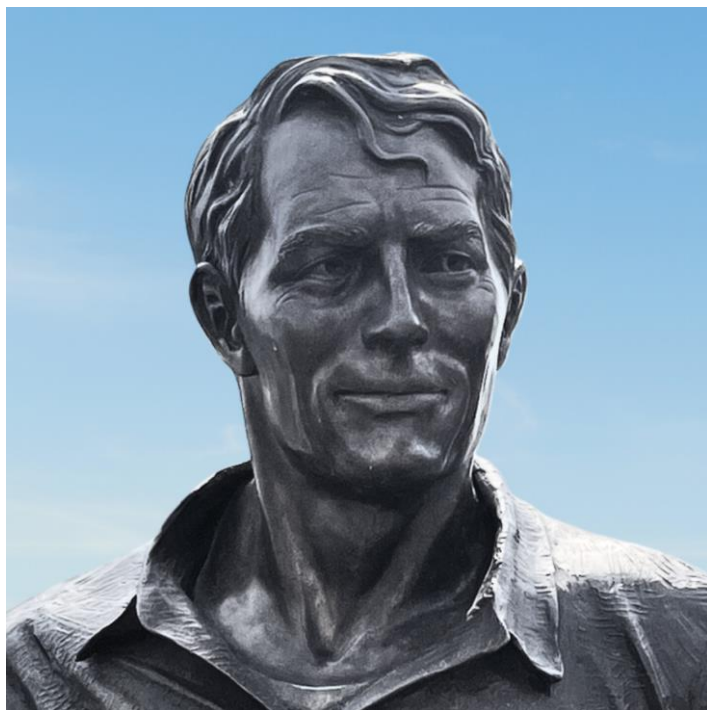


Engage and Connect with The Skilled Workforce

Better than a job board, more than a recruiter,
a community-built network.

BOOMNATION★

Brent Flavin
Co-Founder
brentf@boomnation.com



#ForTheSkilled



kylejhand 2w

I know plenty of guys, trapped at a desk, who would love to get into the trades. But they have families and it feels like the cost to take the leap is unattainable. Fixing the leap would create an opportunity to find new guys who are responsible and ready to learn.

Reply **Hide**

1,200,000

Census Bureau Job to Job Flow Data

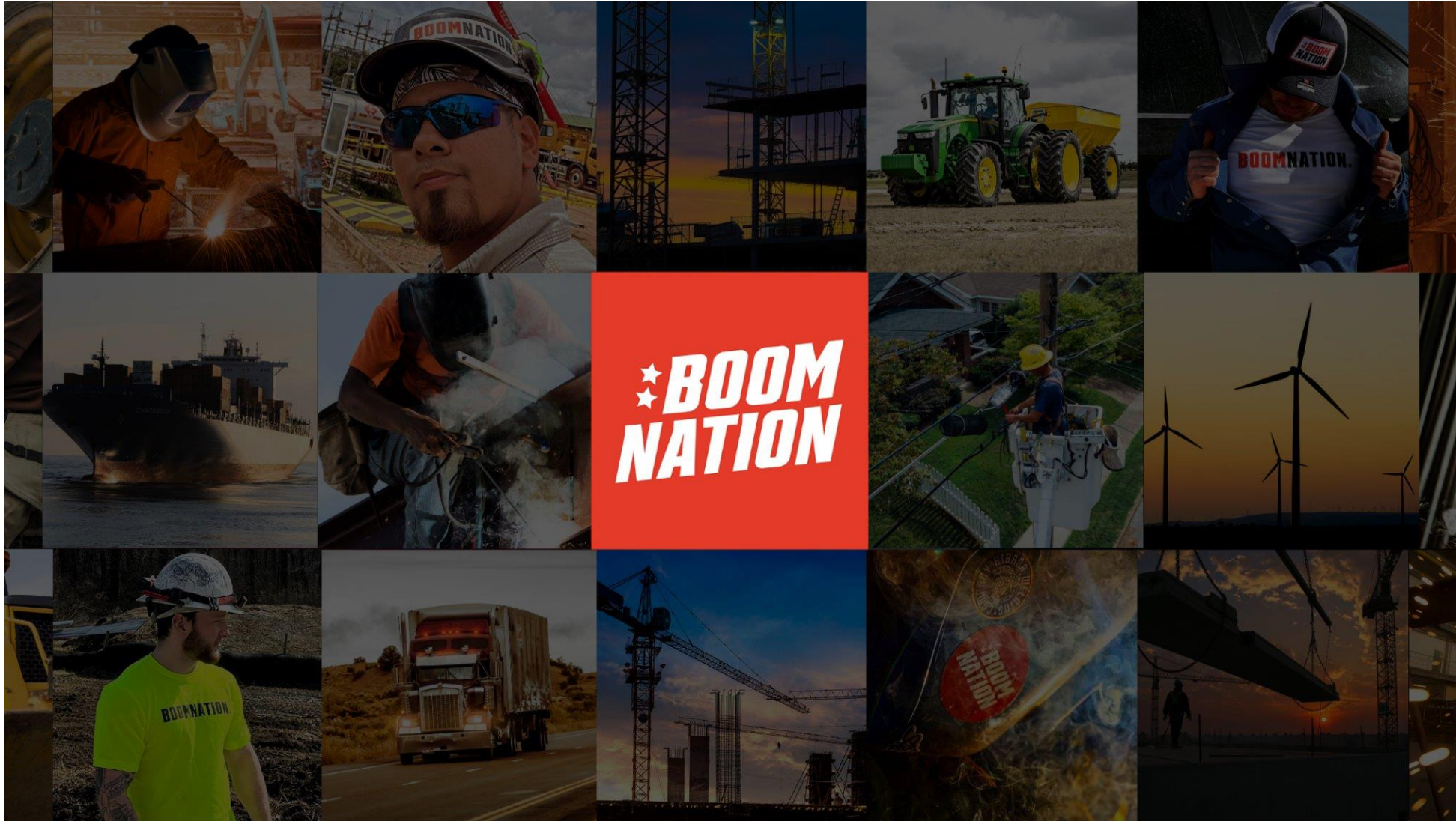
< or equal to 24 y/o

**64% Construction
Turnover Rate**

25-34 y/o

**30% Construction
Turnover Rate**

ADP Workforce Vitality Index



BoomNation, not just a platform; a blue collar movement powered by technology.





Helping workers work safer and better.

Educating the next generation of health and safety professionals.



TEXAS A&M HEALTH
Ergo Center

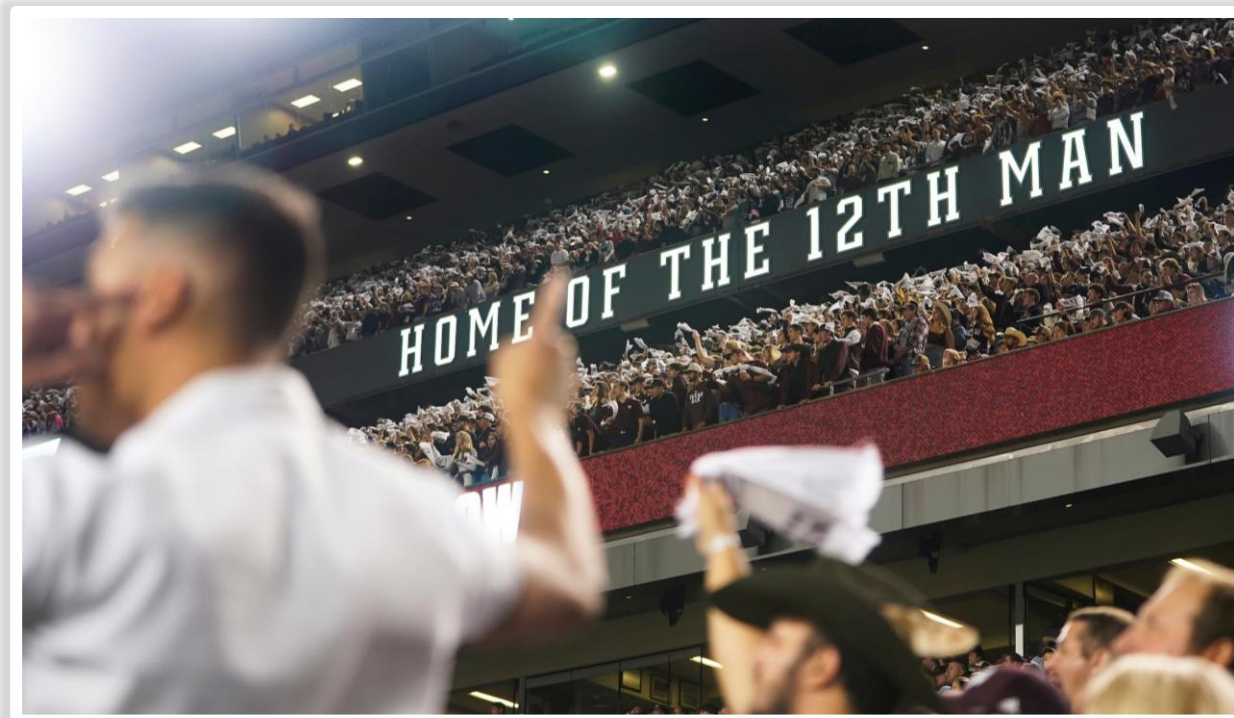
Martha Parker
Ergonomist & Managing Director
marthaparker@tamu.edu



**400,000 OPEN
TRADE JOBS**

Retaining Workers

Create a Positive and Inclusive Work Environment



What does this choice say about your
Culture and how you value workers?

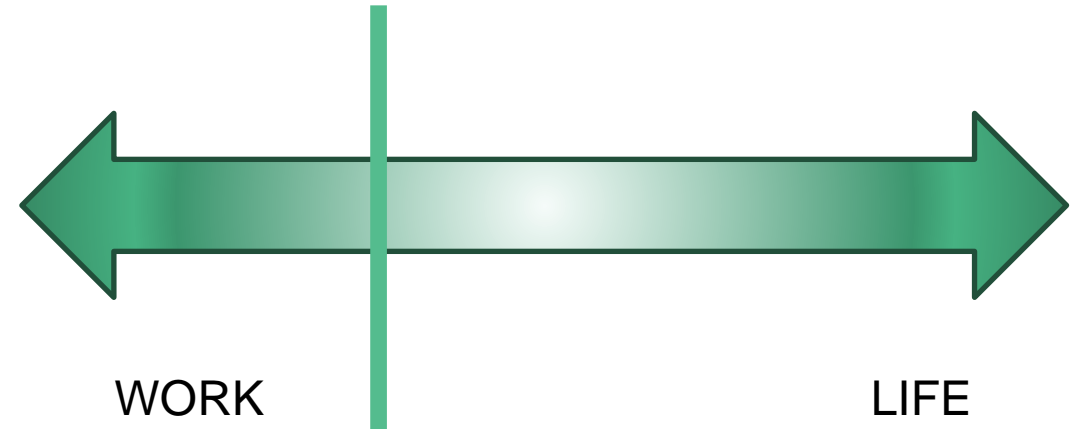


vs





Balance vs Continuum



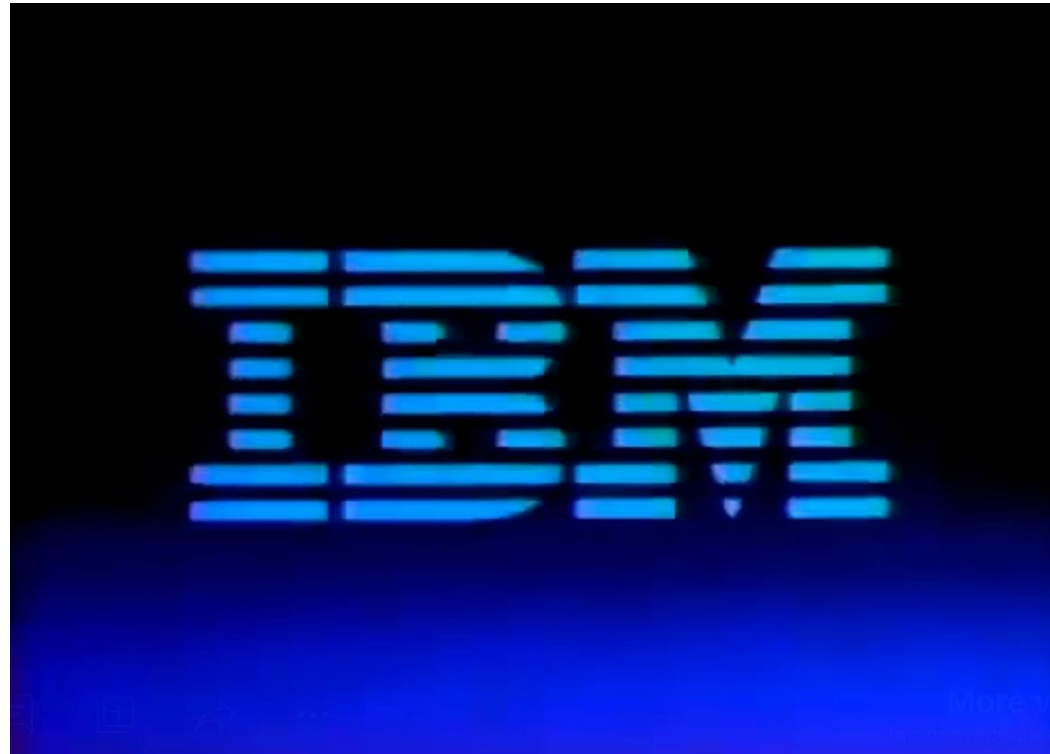
Retaining Workers Safety and Well-being



Up for debate...



You make the call!





Questions and Answers
